

First Project of 1998 - K-3 School Berryville

"Before"



Plants are delivered



BERRYVILLE SCHOOL
FF = 1290.00

CONCRETE
back entry
front entry

play ground

side entry

front entry

bus turn around

Amphitheater

parking
lot
island

Areas where we
can plant

LIMITS OF CONSTRUCTION

SITE MARKER
COTTON SPINDLE IN
WEST SIDE OF TREE
EL. 1300.62

NORMAL GUTTER
ELEV = 1288.84
FL = 1284.83
SPURRING ON BOTH SIDES

NORMAL GUTTER
ELEV = 1288.44
FL = 1284.43
SPURRING ON BOTH SIDES

N 89°59'28" W 241.02'
(RECORD N 90°00'00" W 241.00')

INDICATES AREA TO
BE FLOODED

FL=1278.41

20A 341 LC 21" COP
FL=1288.77

20A 303 LC 21" COP @ 0.80%

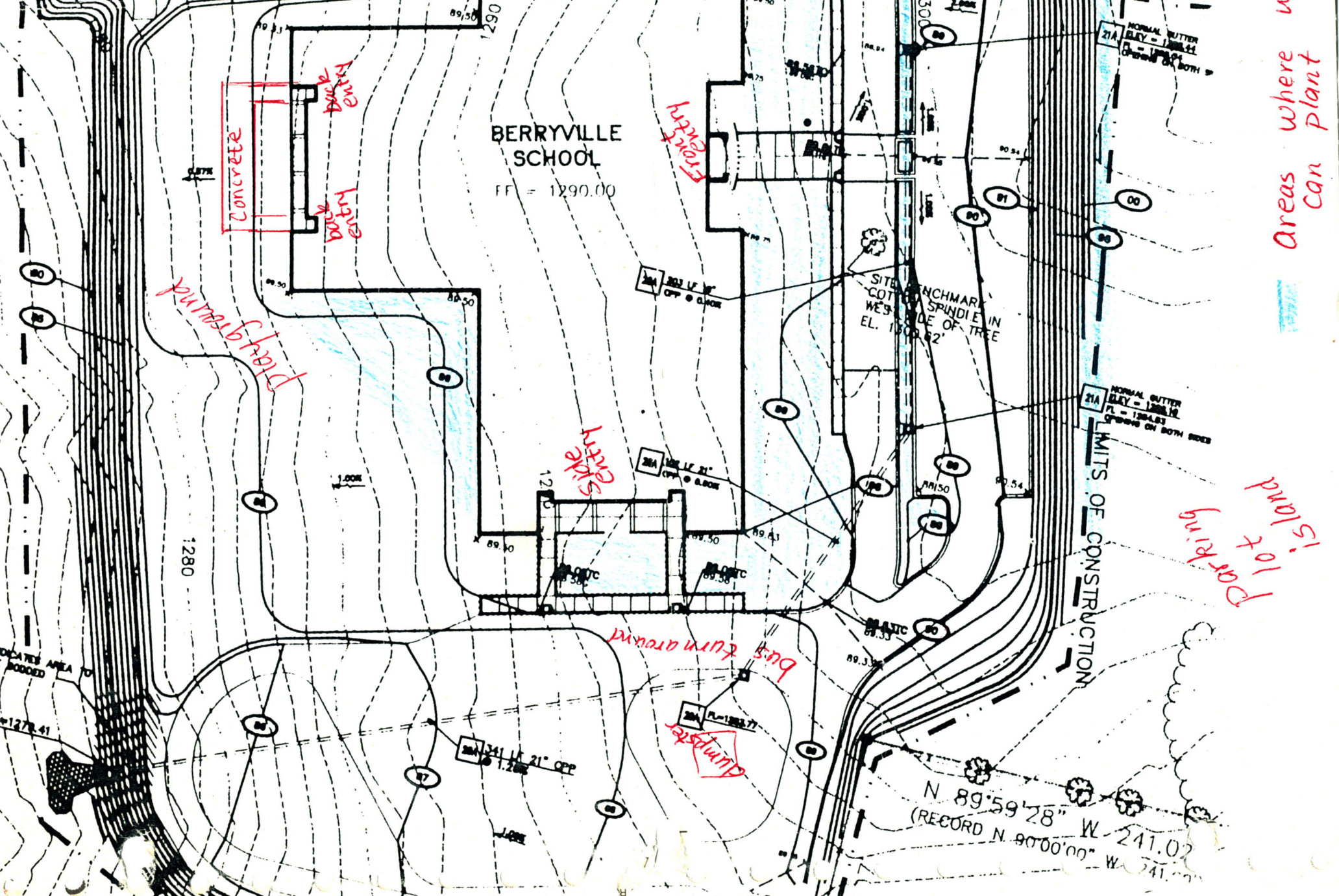
20A 303 LC 21" COP @ 0.80%

20A 313 LC 21" COP @ 0.80%

20A 313 LC 21" COP @ 0.80%

1280

1290





" After "



Newly Planted

Fall 2001 K-3 Berryville







Berryville Elementary
School 2003



Berryville K-3 School Project